

THE GIRL SCOUT TRIAD EXPERIENCE CENTER



Explore our Experience Center for budget-friendly Girl Scout adventures without hotel expenses. It's perfect for sleepovers, gatherings or meetings, fostering learning and bonding. Reserve your FREE space today at bit.ly/3NCgABv.



SPACE SPECIFICATIONS:

The Triad Experience Center offers wifi, large screen tv, four non-folding tables and sixteen chairs that can be moved around to fit individual needs. We have a child teepee, floor pillows and two pedestal desks as well as a kitchenette with a sink, refrigerator (no icemaker) and water cooler with cold and hot water.

Address & Hours:

The Girl Scout Service Center: 3300 Battleground Avenue, Suite 404, Greensboro, NC 27410
Shop and Service Center hours are Monday, Tuesday and Thursday, 10 a.m. - 5 p.m.

EXPLORE GREENSBORO (TRIAD)



Greensboro Downtown Parks

Greensboro Downtown Parks, Inc. oversees the city's parks, aiming to create spaces where individuals can gather, enjoy recreational activities, and unwind.

<https://www.greensborodowntownparks.org>



The Greensboro Science Center

The Greensboro Science Center provides engaging, hands-on experiences with animals and the natural world.

<https://ashevillescience.org/>



Urban Air Adventure Park

Urban Air Adventure Park is an indoor adventure destination that offers a wide range of activities, including trampoline parks, rope courses, climbing walls, go-karts, and much more.

<https://www.urbanair.com>



Mad Splatter

Mad Splatter offers a fun experience for all ages, with activities like paint splatter rooms, pottery painting, and canvas painting.

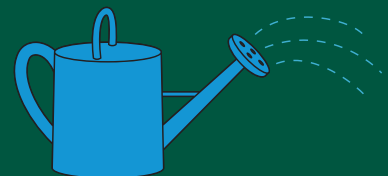
<https://madsplatter.com>



Miriam P. Brenner Children's Museum

The Miriam P. Brenner Children's Museum offers engaging learning experiences through STEM activities and more!

<https://mbcmuseum.com/>



The Bog Garden at Benjamin Park

The Bog Garden at Benjamin Park features the calming sounds of Serenity Falls and diverse plants and wildlife for visitors to enjoy.

<https://greensborobeautiful.org/gardens/bog-garden/>

THE GIRL SCOUT ASHEVILLE EXPERIENCE CENTER



Explore our Experience Center for budget-friendly Girl Scout adventures without hotel expenses. It's perfect for sleepovers, gatherings or meetings, fostering learning and bonding. Reserve your FREE space today at bit.ly/3Q6CUdV.



SPACE SPECIFICATIONS:

The Experience Center provides 4 movable non-folding tables and chairs, accommodating requests for more than 8 chairs. Amenities include a kitchenette with a sink, refrigerator (no icemaker), and a water cooler. Attendees should bring their own paper products, dishes, utensils, and food. The unisex restroom has extra supplies, and only toilet paper should be flushed. A large screen TV is available, with instructions for using an HDMI cable (select HDMI 1) and a USB webcam; users can access personal streaming accounts but must log out before leaving.

Address & Hours:

The Girl Scout Asheville Service Center: 37 College Place, Asheville, NC 28801.
Shop and Service Center hours are Monday, Tuesday and Thursday, 10 a.m. - 5 p.m.

EXPLORE ASHEVILLE



Pisgah National Forest

Pisgah National Forest spans over 500,000 acres, featuring peaks, waterfalls, and woodlands. It includes whitewater rivers and trails, offering diverse outdoor activities and beautiful views.

<https://www.fs.usda.gov/r08/northcarolina/recreation/pisgah-national-forest>



The Asheville Museum of Science

The Asheville Museum of Science serves as a vibrant local science center, featuring captivating and interactive hands-on exhibits that are ideal for visitors of all ages!

<https://ashevillescience.org/>



The Western North Carolina Nature Center

The Western North Carolina Nature Center showcases diverse wildlife and plants from the Southern Appalachian Mountains, featuring over sixty animal species and native plants.

<https://wildwnc.org/>



The Adventure Center

The Adventure Center of Asheville offers an array of exhilarating activities, such as an obstacle course, ziplining, mountain biking, and a whole lot more.

<https://ashevilletreetopsadventurepark.com/>



Lazoom

On LaZoom's Kids' Comedy Tour bus, you'll explore Asheville's city history in a fun and engaging way, complete with eccentric guides, humorous skits, and surprise appearances.

<https://www.lazoomtours.com/lil-boogers/>



The Biltmore Estate

Relish stunning gardens, picturesque farmland, the charming Antler Hill Village, and the exciting Pisgah Playground.

<https://www.biltmore.com/>